

MINITRANSPORTER CINGOLATO

SC-210D

CON MOTORE MITSUBISHI

ESPLOSO RICAMBI

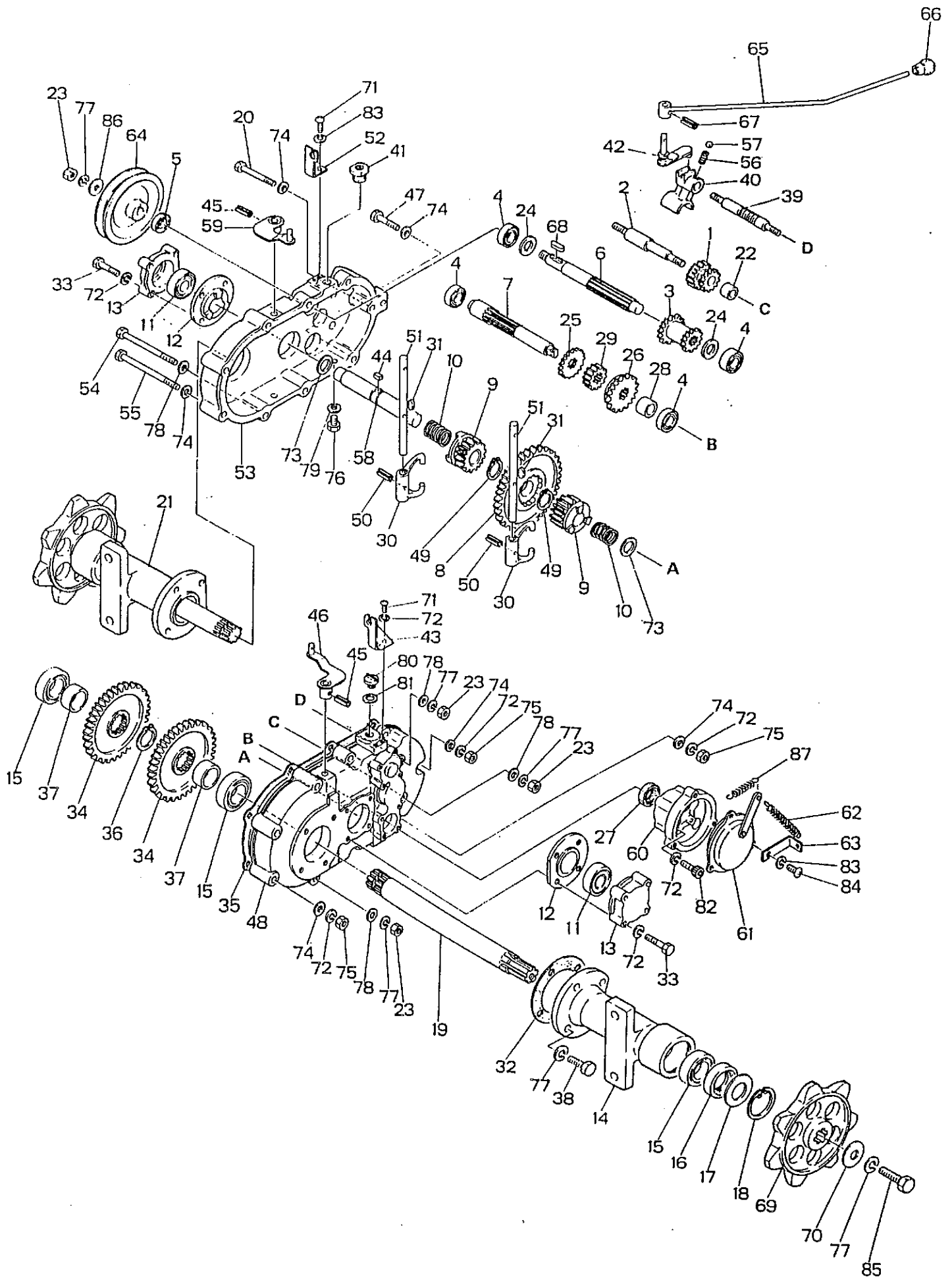
SABRE ITALIA 

Tel. 0444 977655 – Fax 0444 977200
www.sabreitalia.com – info@sabreitalia.com

— C O N T E N T S —

1.	TRANSMISSION	2
2.	FRAME	6
3.	LOADING PALLET	10

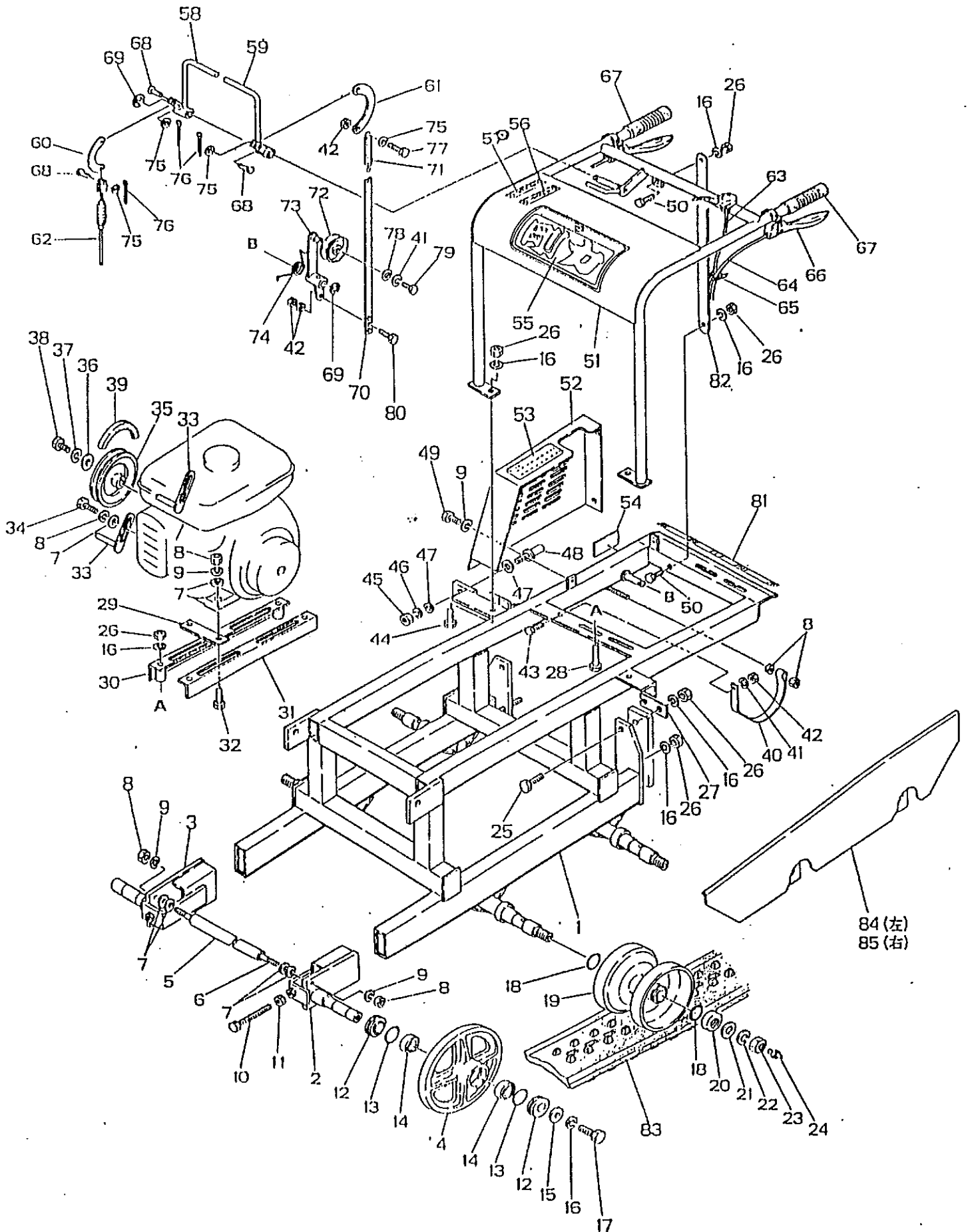
① TRANSMISSION



NO.	PARTS NOS.	PARTS NAMES	QTY	STANDARD	REMARKS
1-1	0116025641	Back Gear	1		
1-2	0116025571	Back Axle	1		
1-3	0116025601	Input Axle Gear	1		
1-4	0040106003	Ball Bearing	4	6003	
1-5	0600173008	Oil Seal	1	TC173008	
1-6	0116025534	Input Axle	1		
1-7	0116065200	Brake Axle	1		
1-8	0116025651	Clutch Gear	1		
1-9	0116025661	Side Clutch Gear	2		
1-10	0116010000	Clutch Spring	2		
1-11	0040106004	Ball Bearing	2	6004	
1-12	0116026005	Clutch Metal	2		
1-13	0116026040	Bearing Cover	2		
1-14	0116025213	Axle Case (L)	1		
1-15	0040106006	Ball Bearing	4	6006	
1-16	0600305512	Oil Seal	2	TC305512	
1-17	0116034000	Oil Seal Cover	2		
1-18	0036500055	Snap Ring	2	H-55	
1-19	0116025561	Axle	2		
1-20	0010100860	Bolt	3	M8 X60 ((半))	
1-21	0116025233	Axle Case (R)	1		
1-22	0116025180	Back	1		
1-23	0020100010	Nut	4	M10	
1-24	0116004000	Input Axle Collar	2		
1-25	0116025611	Top Gear 19T	1		
1-26	0116025631	Low Gear 26T	1		
1-27	0600173007	Oil Seal	1	TC173007	
1-28	0116025190	2nd Axle Collar	1		
1-29	0116025621	2nd Axle Gear	1		
1-30	0116026030	Gear Shifter B	2		
1-31	0300040409	Spill	2	4 X 4 X 9 (兩丸)	
1-32	0116024000	Axle Case Packing	2		
1-33	0100000016	Bolt	8	M8 X35	
1-34	0116025120	Axle Gear 47T	2		
1-35	0116024010	Transmission Case Packing	1		
1-36	0036100030	Snap Ring	2	S-30	
1-37	0116025170	Axle Collar	2		
1-38	0010101025	Bolt	8	M10 X25	
1-39	0116026070	Shifter Rod	1		

NO.	PARTS NOS.	PARTS NAMES	QTY	STANDARD	REMARKS
1-40	0116025201	Gear Shifter A	1		
1-41	0116025410	Shift Lever Guide	1		
1-42	0116025400	Shift Lever	1		
1-43	0116026111	Wire Stopper (L)	1		
1-44	0300050508	Spill	1	5×5×8 (両角)	
1-45	0030300422 0030302520	Spring Pin	各2	φ4×22. φ2.5×20	
1-46	0116033400	Clutch Lever (L)	1		
1-47	0100000017	Bolt	2	M8×35	
1-48	0116000000	Trnsmission Case (L)	1		
1-49	0036100020	Snap Ring	2	S-22	
1-50	0030300420	Snap Ring Pin	2	φ4×20	
1-51	0116026050	Clutch Rod	2		
1-52	0116026112	Wire Stopper (R)	1		
1-53	01160-0010	Transmission Case (R)	1		
1-54	01000-0062	Bolt	2	M10×120 (半)	
1-55	01000-0025	Bolt	2	M8×110 (半)	
1-56	0116010200	Gear Shifter Spring	1		
1-57	0048109998	Steel Ball	1	φ8球	
1-58	0116025551	Clutch Axle	1		
1-59	0116033410	Clutch Lever (R)	1		
1-60	0116026100	Brake Holder	1		
1-61	0116026110	Brake Shoe	1		
1-62	6062104020	Returning Spring	1		
1-63	6012263000	Spring Install Metal	1		
1-64	6012301000	Input Axle Pulley	1		
1-65	6012331000	Shift Change Lever	1		
1-66	6066030030	Grip	1	φ12用 黒	
1-67	0030300325 0030300525	Spring Pin	1	φ3×25, φ5×25	
1-68	0300000023	Spill	1	5×5×25 (両丸)	
1-69	6030020000	Sprocket	2		
1-70	6030201000	Round Washer	2		
1-71	0015100614	Pan Head Screw	4	M6×14	
1-72	0027100008	Spring Washer	16	M8	
1-73	0116004200	Collar	2		
1-74	0026100008	Flat Washer	12	M8	
1-75	0020100008	Nut	16	M8	
1-76	0116019200	Drain Plug	1	M10×12	
1-77	0026100010	Flat Washer	1	M10	
1-78	0020100008	Nut	8	M10	

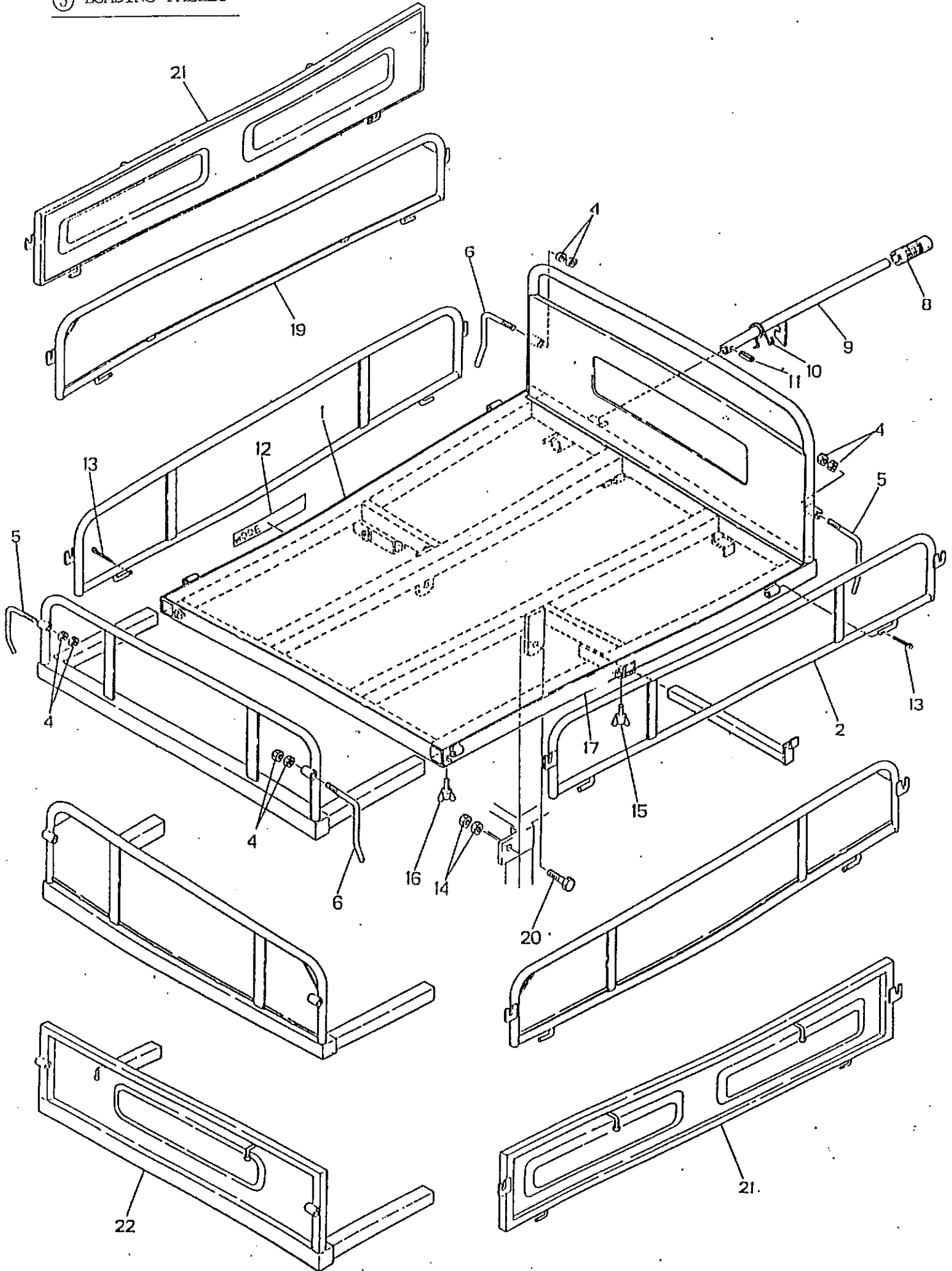
② FRAME



NO.	PARTS NOS .	PARTS NAMES	QTY	STANDARD	REMARKS
2-1	6011180000	Chassis	1		
2-2	6011540010	Front Wheel Axle (L)	1		
2-3	6011540000	Front Wheel Axel (R)	1		
2-4	6011530000	Front Wheel	2		
2-5	6011040000	Collar	1		
2-6	6011160000	Shaft	1		
2-7	0026100008	Flat Washer	12	M8	
2-8	0020100008	Nut	9	M8	
2-9	0027100008	Spring Washer	8	M8	
2-10	0100000001	Bolt	2	M16×120(全) (S45C)	
2-11	0020100016	Nut	2	M16	
2-12	6011043000	Dust Protect Collar	4		
2-13	0052300450	O-Ring	4	G-45	
2-14	0040146005	Ball Bearing	4	6005 (2NS)	
2-15	6030201000	Washer	2		
2-16	0027100012	Spring Washer	2	M12	
2-17	0010111245	Bolt	2	M12×45 (半) (S45C)	
2-18	0052100360	O-Ring	8	P-36	
2-19	6011550000	Free Wheel	4		
2-20	6061591000	Free Wheel Dust Protect Cap	4		
2-21	0026100020	Flat Washer	4	M20	
2-22	0027100020	Spring Washer	4	M20	
2-23	0020200020	Nut	4	M20×P1.5	
2-24	0060660000	Grease Nipple	4	UNF 1/4 (28山)	
2-25	0010101245	Bolt	2	M12×45 (半)	
2-26	0020100012	Nut	4	M12	
2-27	6012261000	Wire Holding Metal	1		
2-28	0010101050	Bolt	4	M10×50 (半)	
2-29	6012720000	Holding Metal	2		
2-30	6012290000	Engine Base	1		
2-31	6012290000	Engine Base	1		
2-32	0100000020	Bolt	4	M8×50 (全)	
2-33	6152370000	Belt Holder	2		
2-34	0010100816	Bolt	2	M8×16	
2-35	6012302000	Engine Pulley	1		
2-36	6016201000	Washer	1		
2-37	0100000015	Bolt	1	M8×25	
2-38	0027100008	Spring Washer	1	M8	
2-39	0080300035	V-Belt	1	B-35	X 9350L
2-39	0080300032	V-Belt	1	B-32	X 9130LN

NO.	PARTS NOS.	PARTS NAMES	QTY	STANDARD	REMARKS
2-40	6012370000	Belt Holder	1		
2-41	0027100006	Spring Washer	1	M6	
2-42	0020100006	Nut	1	M6	
2-43	0100000008	Bolt	1	M6×20	
2-44	0010101020	Bolt	2	M10×20	
2-45	0020100012	Nut	1	M12	
2-46	0027100012	Spring Washer	1	M12	
2-47	0026100012	Flat Washer	2	M12	
2-48	6062070010	Bolt (Dump Hook)	1		
2-49	0010100812	Bolt	2	M8×12	
2-50	0100000028	Bolt	1	M10×30 (全)	
2-51	6012310000	Handle	1		
2-52	6012341000	Belt Cover	1		
2-53	6016020020	Caution Mark	1		
2-54	6066020030	Model Mark	1		
2-55	6066020080	Brand Mark	1		
2-56	6066020000	Drive On-Off Mark	1		
2-57	6066020010	Brake On-Off Mark	1		
2-58	7042335000	Tension Lever (L)	1		
2-59	7042332000	Tension Lever (R)	1		
2-60	2737220010	Brake Rod	1		
2-61	6012400000	Rod	1		
2-62	6016041000	Brake Wire	1		
2-63	6066043000	Throttle Wire	1		
2-64	6016042001	Cavo Frizione Laterale	2		
2-65	6036280000	Wire Band	2		
2-66	6016131000	Side Clutch Lever	2		
2-67	6066030000	Grip	2		
2-68	6066080000	Pin	2		
2-69	0036800012	Snap Ring	2	E-12	
2-70	6012401000	Tension Rod	1		
2-71	6062105000	Tension Spring	1		
2-72	6066110000	Tension Pulley	1		
2-73	6012280000	Tension Arm	1		
2-74	6012104000	Return Spring	1		
2-75	0026100006	Flat Washer	4	M6	
2-76	0030102515	Cotter Pin	3	φ 2.5×15	
2-77	0100000008	Bolt	1	M6×20	
2-78	6066070000	Washer	1		

③ LOADING PALLET



NO.	PARTS NOS.	PARTS NAMES	QTY	STANDARD		REMARKS
3-1	6012600000	Deck	1			
3-4	0020100010	Nut	8	M10		
3-5	6002392000	Door Hook	2			
3-6	6002392010	Door Hook	2			
3-8	6066030000	Grip	1			
3-9	6012393000	Dump Hook	1			
3-10	6062104040	Return Spring	1			
3-11	0030300530	Spring Pin	1	φ 5 × 35		
3-12	6016020000	Load Capacity Mark	1			
3-13	0030103025	Cotter Pin	2	φ 3 × 20		
3-14	0020100012	Nut	4	M12		
3-15	0014100815	Wing Bolt	2	M8 × 15		
3-16	0014100815	Wing Bolt	2	M8 × 15		
3-17	6016020031	Model Mark	1			
3-20	6036050000	Bolt	2			
3-21	6012610001	Door (Side)	2			
3-22	6012632001	Front Frame	1			